

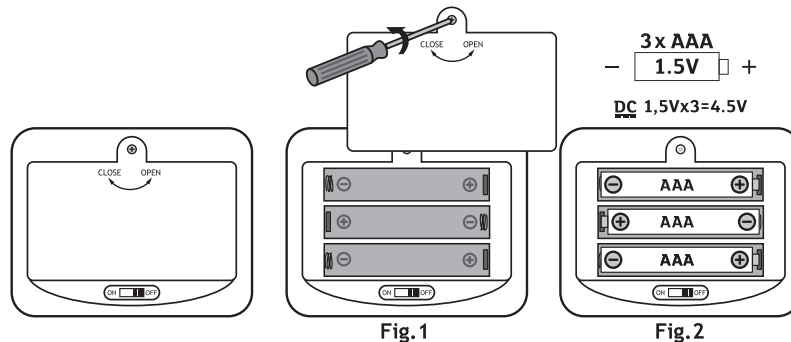
Hello, I am Singing Panda. Let's have a party together with your friends. We can sing, dance and play together. Let the party begin!

Please keep the instruction manual for use in a safe place as it contains important information. Pass the instruction manual onto third parties and make sure that third parties only use the product once they have received the necessary instructions.

Safety and operation information:
Please read this information carefully and keep it somewhere safe. To avoid any surprises when playing we recommend you go through the information together with your child and explain how the toy works.

Warning!
Remove all wires, plastic or rubber bands, tags or any other fasteners from the toy before giving it to the child for safety reasons.

Inserting and replacing the batteries:
The alkaline batteries included in the cuddly toy are exclusively for demonstration purposes in the shop. Please replace the batteries with new alkaline batteries before you use it for the first time.
The toy can only be operated using three AAA 1.5V batteries.

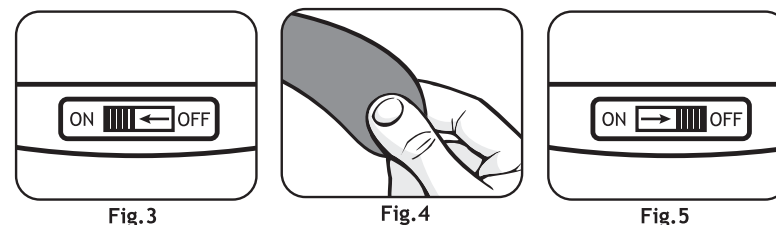


- 1) Open the battery compartment's plastic lid using a screwdriver (not supplied) (Fig. 1)
- 2) Remove the old batteries, if applicable and insert 3 new AAA batteries into the provided slots. Make sure that the poles are the right way round (Fig. 2)
- 3) Replace the lid on the battery compartment and tighten the screw using the screwdriver.

Handling batteries safely and responsibly:
Batteries should only be inserted/removed by an adult or under adult supervision. Do not let batteries overheat, do not expose them to rays of sunshine, fire or anything similar. We do not recommend rechargeable batteries for a longer operating time.
If the toy is not being used for a longer period of time, push the switch into the "OFF" position to increase the battery life. We also recommend removing the batteries to avoid any leakage and damage to the product.
Non-rechargeable batteries should not be recharged.
Different batteries or new and used batteries should not be used together. Please remove used batteries. The terminals should not be shorted.
Place the batteries into the provided slots and make sure that the poles are the right way round. Rechargeable batteries should be removed from the device before being charged. Rechargeable batteries should only be recharged under adult supervision. Electrical equipment/batteries should not be disposed of in the household waste. In the interest of environmental protection, we ask you to hand in all batteries at the provided collection points at the end of their life so that they are recycled.
Consult a physician immediately in the event of swallowing a battery.
Batteries must not be disposed of in the household waste. You are legally required to take empty batteries to a suitable collection container. You can inquire about suitable locations with your local authority.

Washing instructions:
Wipe the surface with a damp cloth.
Do not let any liquids get into the battery compartment!

Initial start-up and functions:
Slide the operating switch to the "ON" position (Fig.3).

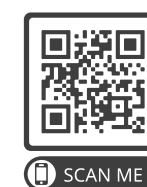


Control from Singing Panda
Press the left hand and the singing panda will sing the first song (Fig.4).
To end the song, press the hand one more time.
The second song will be played when you press the left hand again.

If the Singing Panda is not operated for a longer period of time, set the operating switch to "OFF", to save battery power (Fig.5).

Song overview:

1. Birthday Song
2. Fun Song



Troubleshooting

No more functions:
Switch the device to "OFF." Remove the batteries of the device and reinsert them.
If the device still has no functions, please replace the batteries with new, charged batteries.

Volume is too weak:
The batteries are too weak. Please replace them with new ones.

Customer service & distributor:
NICI GmbH | Langheimer Str 94 | 96264 Altenkunstadt | Germany
Tel: 09572 7220 -0 | Fax: 09572 7220-109 | www.nici.de
Artikelnr./item no: 48417